

LE KLINT

---

80

---

1943 - 2023

Made in **Odense**, Denmark



# LE KLINT HISTORY



The story of LE KLINT dates back to the beginning of the 20th Century when a hand pleated lampshade was folded to fit a paraffin lamp both designed by architect and master of engineering, P.V. Jensen Klint.

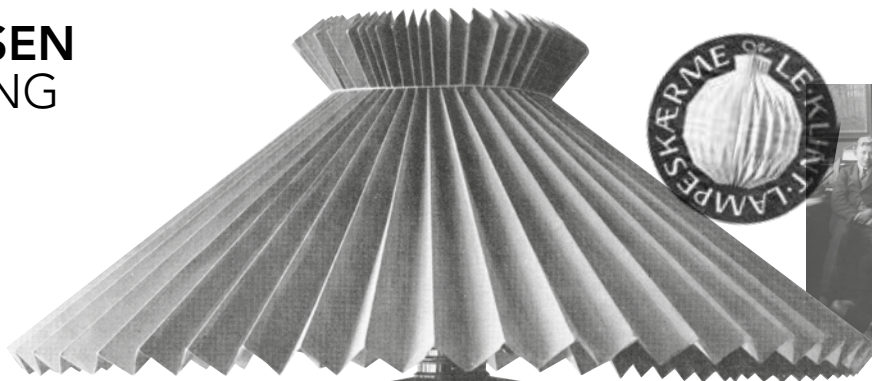
Today, we embrace the ingenuity of talented young designers who make a design statement that is cohesive with our DNA. This is why the history of LE KLINT is not just another story of a business but a story of drive and determination that keeps LE KLINT current and even ahead of the constant changes in trends.



Made in Odense since 1943



# BEGYNDELSEN THE BEGINNING



LE KLINTs historie starter helt tilbage i begyndelsen af 1900 tallet hvor den første plisserede lampeskærm blev udviklet af P.V. Jensen-Klint til en petroleumslampe, som han ligeledes havde tegnet. I de efterfølgende år syslede hele familien Klint, inklusive sønnerne Tage og Kaare Klint, med at forfine skærmen, som i disse år blev til gaver til familie og venner.



The story of LE KLINT dates back to the start of the 20<sup>th</sup> century, when P.V. Jensen-Klint folded the first pleated lampshade to fit a paraffin lamp that he had designed. In the following years, sons Tage, Kaare and the entire Klint family worked on refining the shade, which were later used as gifts for family and friends.



# 1940-1949

Den ene af P.V. Jensen-Klints sønner var den kreative iværksætter, Tage Klint, som i 1943 valgte at gøre Klint familiens husflid og folderi til egentlig forretning, og stiftede firmaet LE KLINT. Her blev de oprindelige Klint-skærme tilføjet en afgørende detalje, nemlig den unikke gribekrave. LE KLINT havde fra starten, stor glæde af P.V. Jensen-Klints anden søn, Kaare Klints enorme talent. Han var en kendt og respekteret arkitekt, kunsthåndværker og designer. "Frugtlygten" som han skabte omkring firmaets start, er den dag i dag, stadig en af firmaets bedst sælgende lamper.

In 1943 P.V. Jensen-Klint's son Tage, pioneered the Klint's family handicraft and pleating skills into a real business and founded the LE KLINT Company. Tage Klint masterminded a new outstanding and decisive detail of adding an elastic collar to the lamps. The talents of P.V.'s other son, Kaare were very beneficial to the company's growth. He was a highly respected, well known craftsman and architect who designed "The Fruit Lamp" in 1943. This iconic creation is still one of LE KLINT's best sellers.



## 1950-1959



I 1953 tog Jan Klint, søn af Tage Klint over. Virksomheden blev effektiviseret, nye modeller sat i produktion, og nye eksportmarkeder blev opdyrket. En af de nye modeller som kom til, var den i dag klassiske LE KLINT-sakselampe, designet af Erik Hansen. Som en harmonika kan lampen trækkes ud og skubbes ind alt efter, hvor man har brug for lyset.

In 1953 Jan Klint succeeded Tage Klint. The company became more efficient, new models were introduced and new export markets were found. The classic sax lamp which was designed by Erik Hansen, evolved from this new expansion. Like an accordion the sax lamp is extended and retracted to obtain the desired lighting position.



## 1960-1969

I 1960'erne blev der igangsat en ny æra for LE KLINT, hvor der for alvor skete noget nyt på produktudviklingsfronten. Dette viste sig i model 153, designet af Andreas Hansen. Med sine skarpe zig-zag foldninger adskilte lampen sig markant fra virksomhedens tidligere modeller, og gav den et meget moderne udtryk.

The 60's were the start of a new era for LE KLINT. Exciting things were happening within the Company's product development sector. Model 153 designed by Andreas Hansen exploded into the range. It's precise zig zag folds differed considerably from the earlier models. It introduced a new modern expression.



## 1970-1979

Direktør Jan Klint stifter en fond, der skal sikre virksomheden og dens medarbejdere. Denne fond har siden 1972 drevet virksomheden LE KLINT. Arkitekt og designer Poul Christiansen vendte for alvor op og ned på hvordan plisserede lamper kunne foldes. Hidtil havde alle LE KLINTs lamper været foldet efter rette vinkler. Poul Christiansen kom på den idé, at plisseer nu kunne foldes efter bølger baseret på matematiske sinuskurver. Resultatet heraf er fantastiske skulpturelle lampeformer som blev til serien "Sinus Line".

In order to safeguard the company and its employees, Jan Klint established The Klint Foundation in 1972, which still plays an important role in the company's financial infrastructure. Architect and designer Poul Christiansen brought new innovative and exciting dimensions to LE KLINT's lampshades. Prior to his involvement the lampshades had been folded in pleats and in straight lines across the pleats. Poul Christiansen discovered that pleats could be folded by combining mathematical sine curves in such a way that they formed a lampshade when folded. The final result was beautiful and unique sculptural shapes, which became the "Sinus Line" series.

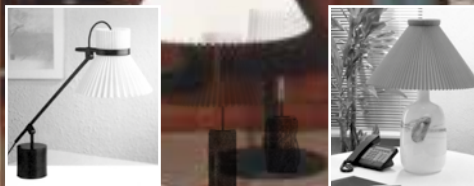
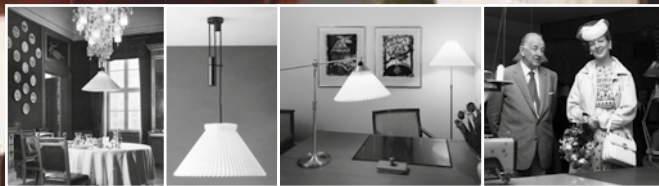




## 1980-1989

Gennem årene har LE KLINT leveret mange lamper til hoffet, til "Dannebrog" og den kongelige salonvogn samt modtagegemakkerne i Københavns Lufthavn, hvor belysningen udelukkende er LE KLINT lamper. Den 9. juni 1980 besøgte Dronning Margrethe LE KLINT. Den daværende direktør Jan Klint var på forretningsrejse i USA og måtte i al hast ændre rejseplaner for at overvære dronningens besøg, hvilket naturligvis blev gjort med glæde og stolthed.

Over the years LE KLINT has been responsible for lighting the Danish Royal Court, The Royal Yacht "Dannebrog", The Royal carriage and Copenhagen Airport's royal reception rooms which are still exclusively illuminated with LE KLINT lamps. The scheduled visit on 9. June 1980 of H.M. Queen Margrethe II to the LE KLINT Head offices and factory, coincided with Managing Director Jan Klint's business trip in the United States. He made no hesitation in re-arranging his appointments and flew back to Denmark in time to greet her majesty with great pride and joy.



## 1990-1999



I begyndelsen af 1990'erne startede samarbejdet mellem LE KLINT og den industrielle designer Philip Bro Ludvigsen. Han designede blandt andet model 376, som var en enkel og stilren lampeserie bestående af bord- og væglamper i aluminium og messing. Denne lampeserie blev senere udvidet med et lysestagesæt til almindelige lys og fyrfadsllys.

Med udgangspunkt i Esben Klints skærm fra 1949, blev et samarbejde mellem Philip Bro Ludvigsen og Thomas Krause, til virksomhedens første halogenlampe, model 395, som fandtes både som bord- og gulvlampe. I 1993 kunne LE KLINT fejre sit 50 års jubilæum. I forbindelse med dette blev der fremstillet en jubilæumslampe som var en model af den oprindelig petroleumslampe og skærm udviklet af P.V. Jensen-Klint.

The collaboration of LE KLINT with Industrial designer Philip Bro Ludvigsen started at the beginning of the 1990's. Among others, Philip designed model 376 which became a series of sleek stylish table and wall lamps in brass and aluminium. This lamp series has been extended to include a candle light set, suitable for use with candles and tea lights.

The cooperation between Philip Bro Ludvigsen and Thomas Krause resulted in the halogen lamp model 395, which existed as both a table- and floor lamp. This model was based on a lampshade designed by Esben Klint in 1949. In 1993 LE KLINT could celebrate its 50<sup>th</sup> anniversary. In that connection an anniversary lamp was produced, which was a model of the original lampshade and paraffin lamp, designed by P.V. Jensen-Klint.

## 2000-2009



Den store fornyelse for LE KLINT kom med Philip Bro Ludvigsen's lampe "UnderCover" som hverken skulle fremstilles i papir eller hvidt plast, eller for den sags skyld foldes. Lampen blev lanceret med udskiftelige inderskærme, der med et snuptag kunne ændre lampens udseende. Finessen er at de ældre, klassiske lampeskærme som Tage Klint's "model 2" også kan anvendes, hvilket giver den klassiske lampeskærm et moderne udtryk. Selvom "UnderCover" umiddelbart ser ud til at bryde med traditionen er designerens pointe med designet at lave en moderne "indpakning" af de klassiske lampeskærme.



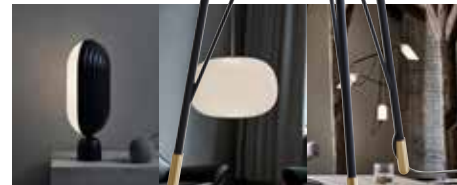
The major renewal in LE KLINT's cooperation with Philip Bro Ludvigsen came when he designed the "UnderCover" lamp series, which was not produced in paper or white plastic, or for that matter, folded. The lamp was introduced with changeable inner shades that gives the user a choice of lampshade to match season, mood or decor. Inserting Tage Klint's model 2 classic lampshades into the new "UnderCover" pendants, gave the classic shades a new modern twist. Even though "UnderCover" may seem to break with tradition, the designers goal of fusing the old with the new comes across quite clearly.



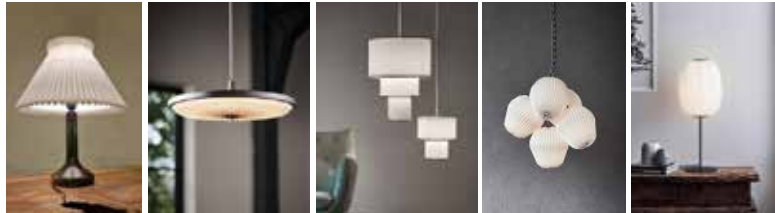
# 2010-2019

Vi fejrer stadig vores 75-års jubilæum – men vi er stadig unge... Vi lancerer til stadighed nye lampedesigns i samarbejde med unge talentfulde designere og arkitekter. Vores nye kollektioner tager ikke kun afsæt i tidens design-trends, men har også klare referencer til vores DNA og sikrer, at LE KLINT fortsat kan bevare sin rolle som et af landets førende designbrands. Vores ambitionsniveau er meget højt og målsætningen er fortsat at kunne udvikle brandet LE KLINT sammen med vores medarbejdere, designere, kunder og partnere. Kvalitet – Design – Håndværk, uden at gå på kompromis er vores nøgleord – ikke bare i dag men også i fremtiden.

We are still celebrating 75 years – young and still going strong. We have introduced new designs from young talented designers of tomorrow. We have launched new lighting collections, that not only reflects what is happening around us in the design industry today but also manages to reference our DNA, in a way that makes LE KLINT continually relevant amongst evolving trends. We are still ambitious and want LE KLINT to evolve further in the years to come and together with our staff, designers, customers and partners we aim to do so. Quality – Design – Craftsmanship, 'with no compromise' our keywords – for the future.



2020-2023





# MODERN COLLECTION

## COMET

Design: Poul Christiansen



## DONUT

Design: Lise Navne



Hang-up for COMET and DONUT in Brass or Steel



## CANDLELIGHT

Design: Philip Bro

## MODEL 180

Design: Shade by Esben Klint  
Base by KLINT Design Team



## MODEL 375

Design: Shade by Esben Klint  
Base by KLINT Design Team



## SOLEIL

Design: Philip Bro



# MODERN COLLECTION

## PLIVELLO

Design: Christian Troels



## CYLINDER

Design: KLINT Design Team



## BEE HIVE

Design: Harrit-Sørensen

## MODERN COLLECTION

### LAMELLA

Design: Takagi & Hornstvedt



## MODERN COLLECTION

### SWIRL

Design: Øivind Slatto





## MODERN COLLECTION

### CALEO

Design: Rikke Frost



### THE BOUQUET

Design: Sinja Svarrer Damkjaer



## MODERN COLLECTION

### SHIBUI

Design: Søren Refsgaard



### SNOWDROP

Design: Harrit-Sørensen+Samson



## MODERN COLLECTION



### PLIVERRE

Design: Christian Troels

### MUTATIO

Design: Christian Troels



### CACHÉ

Design: Aurélien Barbry



## MODERN COLLECTION



### CARRONADE

Design: Markus Johansson

## CLASSIC COLLECTION

### MODEL 101

Design: Kaare Klint



Hangup for model 101  
in Brass or Steel

## CLASSIC COLLECTION

### MODEL 172 · SINUS

Design: Poul Christiansen



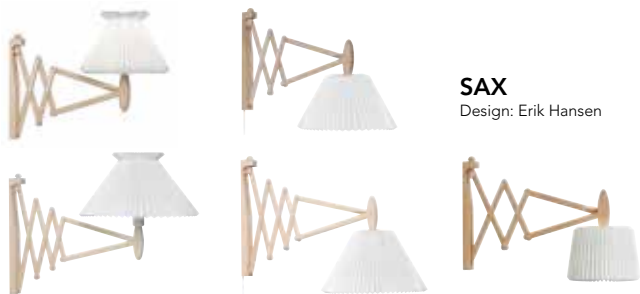
Hangup for model 172  
in Brass or Steel

### MODEL 105

Design: Mogens Koch



## CLASSIC COLLECTION



**SAX**  
Design: Erik Hansen



Lampshades model 120 are available in standard and Silk White paper.



**MODEL 306**  
Design: Kaare Klint



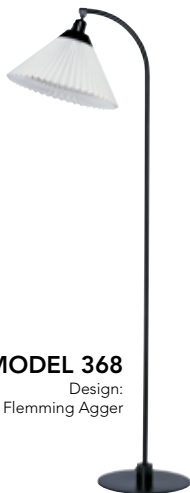
**MODEL 314**  
Design: Andreas Hansen



**MODEL 204**  
Design: Vilh. Wohlert



**MODEL 311**  
Design: Esben Klint



**MODEL 368**  
Design: Flemming Agger

## MASTERPIECES



**MODEL 343**  
Design: Büllmann-Petersen



**MODEL 307**  
Design: Esben Klint



**MODEL 352**  
Design: Aage Petersen



**MODEL 325**  
Design: Vilh. Wohlert



**MODEL 349**  
Design: Aage Petersen



**MODEL 351**  
Design: Aage Petersen

# SHADES COLLECTION

## LE KLINT LAMPSHADES



**MODEL 1**

Design: Tage Klint



**MODEL 2**

Design: Tage Klint



**MODEL 6**

Design: Tage Klint



**MODEL 12**

Design: Tage Klint



**MODEL 16**

Design: Tage Klint



**MODEL 17**

Design: Robert Kasal



**MODEL 26**

Design: Tage Klint



**MODEL 30**

Design: KLINT Design Team



**MODEL 33**

Design: Robert Kasal

Visit our website for further information on all our lighting attachments, accessories, guide to find the right size of your lampshade and more.

På det danske marked er shades kollektionen kun tilgængelig hos udvalgte partnere og LE KLINT Brand Stores / leklint.com

# SEASONAL COLLECTION

## THE LOVE & LIGHT PROJECT

### HEARTS

Design: Isa Dawn Whyte Jensen



### HEARTLIGHTS

Design: KLINT Design Team



### TWINKLESTAR

Design: KLINT Design Team

### SNOWFLAKES & ANGELS

Design: Tine Mouritsen



Heart, Snowflake, Angel, HeartLight and TwinkleStar designs were created and produced in the same principles, as our hand-pleated lamp-shades. These designs are contributors to The Love & Light project where a percentage of the sales goes towards charity. Follow our charity work on leklint.com

The  
Love & Light  
Project 

# MADE FOR YOU

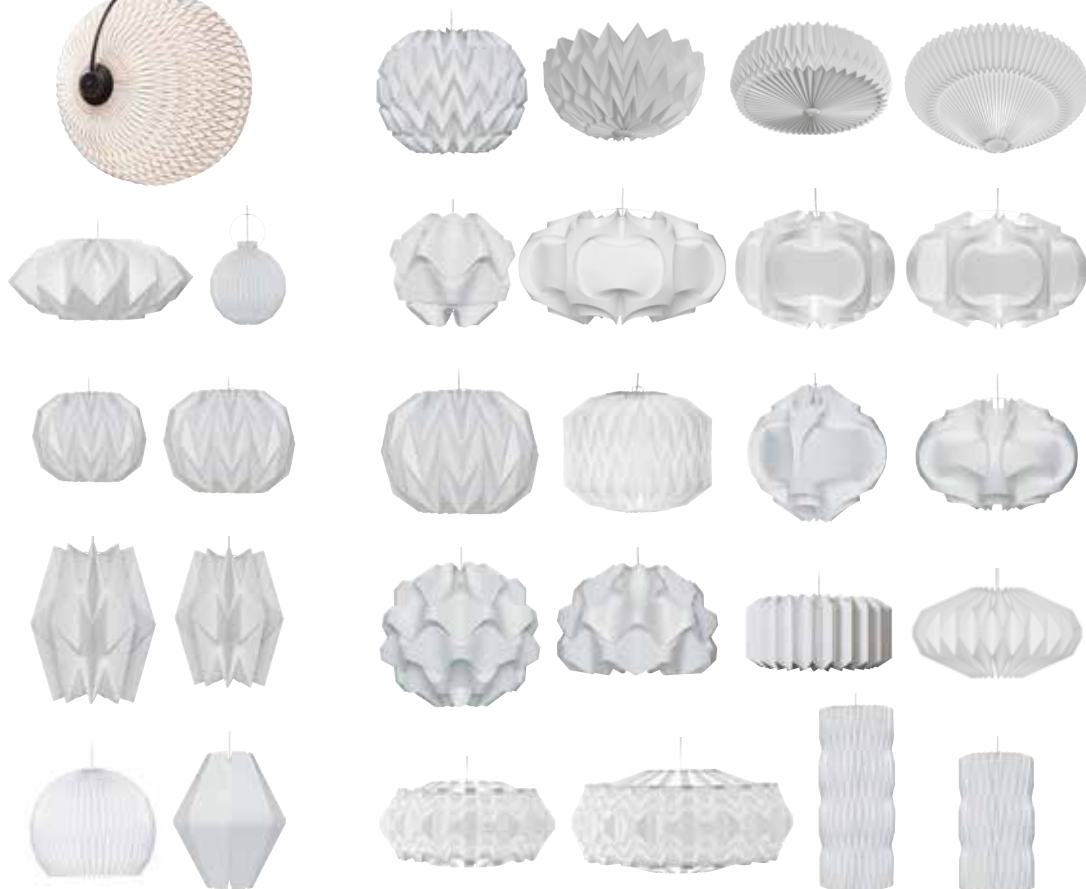
Lamps in this category are not readily available in our stock. They are produced by special order **only**.



Made for You er kun tilgængelig i  
LE KLINT Brand Stores / [leklint.com](http://leklint.com)



# MADE FOR YOU







Leverandør til Det Kongelige Danske Hof  
Purveyors to the Royal Danish Court

# LE KLINT

Egestubben 13-17 · DK-5270 Odense N  
Tel. +45 66 18 19 20 · [www.leklint.com](http://www.leklint.com)

Follow us

