

# HIGHLIGHTS *Autumn Winter*



**WOUD**



# A FLASH OF AUTUMNAL COMFORT

As much as we adore the white nights and sunkissed days, there is something genuinely special about autumn's colours and cosy domesticity. Our Autumn-Winter 2022 collection presents purposeful, curated designs with a coherent focus on the beauty of natural materials and soft shades that reflect the coming, generous seasons.

The evocative nature affects us in a very fascinating way and we feel profoundly lucky to be surrounded by the constantly mutable Scandinavian seasons. Every season possesses its own endearing characteristics. With this collection, we remind ourselves to appreciate the both powerful and all-embracing yet vulnerable nature. The early morning dew on the leaves. Placid walks in the meadow. And the freezy and breezy days that call for warm blankets and pleasant conversations by candlelight.

Representing a longing for the natural calm and encompassing changeable nature, the new additions include comfy textiles, mellow lights and holders for wavering candles. All products that invite you to contemplation, reflection and comfort.

**WOUD**

# INVITING, COSY BLANKETS FOR COLD NIGHTS



**DOUBLE THROW** designed by Studio MLR  
**CONO FLOOR LAMP** designed by Benny Frandsen  
**NAKKI 1-SEATER** designed by Mika Tolvanen

### The Double throw

Bring tactility to your room with the velvety Double blanket, named after its double-sided weaving technic. The fine Double plaid is now introduced in two new Nordic-inspired hues; beige/off-white and light grey/dark grey. With its quiet design and muted colours, the woollen blankets effortlessly suit all timeless homes, whether you prefer warm tones or cold shades.

Made of 100% quality merino wool, Double has a light feel despite its size while it still provides desirable warmth. The throws are designed by the rewarded Danish textile designer Marie-Louise Rosholm and woven in Northern India, an area known for its high-quality craftsmanship and its long tradition of making beautiful and exclusive fabrics.

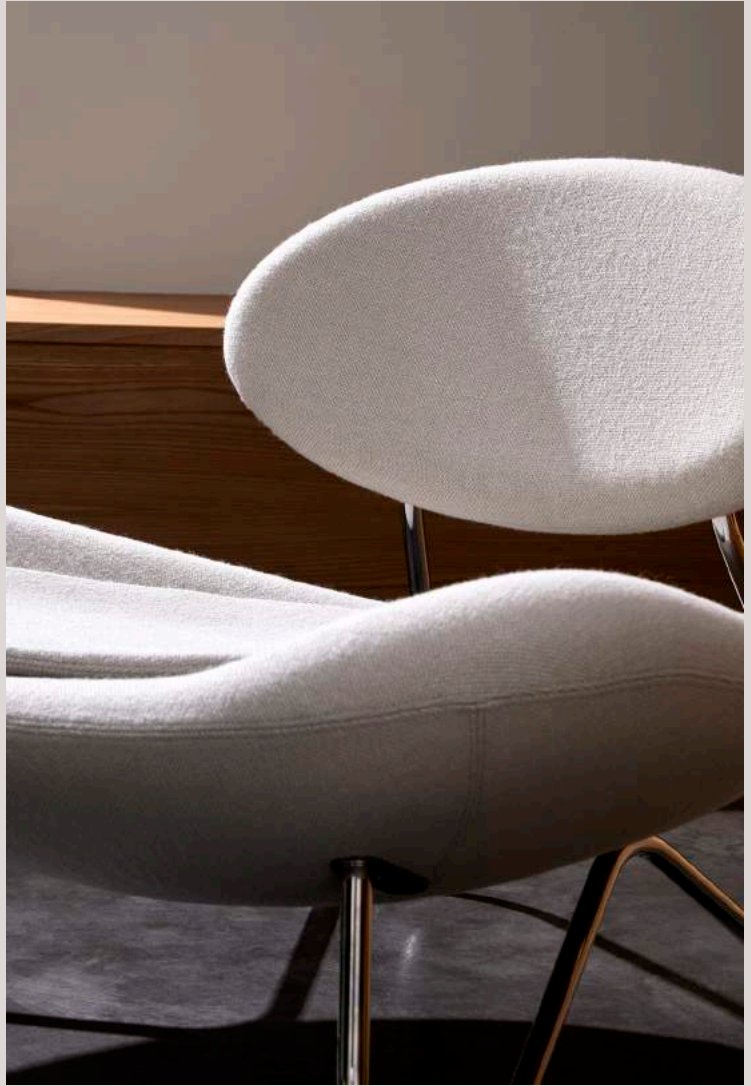


DOUBLE THROWS designed by Studio MLR

### The Meadow lounge chair

Designed from the memory of sitting in high grass, swaying in the summer breeze, the Meadow lounge chair combines soft upholstery with a modern graphic frame. With a desire to convey the feeling of sitting in a meadow, the design carries an embracing and mellow aesthetic while the wide seat resembles open spaces.

Meadow is characterised by amiable organic shapes and curvy lines. Made from high-quality foam, the lounge chair persuasively portrays a solid yet soaring silhouette, while it offers a comfortable seating experience. A comfort that is enhanced by its wide seat combined with the lightly swaying metal frame. Constructed to support the movement of the human body.



**MEADOW LOUNGE CHAIR** designed by Finn Hvidberg Nielsen



# TAKE A PLACID SEAT IN THE MEADOW



**ORGANIC LINES  
INSPIRED BY  
THE SOOTHING  
SHAPES FOUND  
IN NATURE**







Born and bred in southern Denmark, designer Finn Hvidberg Nielsen enjoyed spending time in the magical nature during the Danish summer as a child. The design of Meadow is based on one of these strong childhood memories from a fine summer day fifty years ago, exploring the verdant and fertile grassy fields. A memory that has been transformed into contemporary and sophisticated lines.

*"I was sitting in the middle of a spacious, and for me back then, endless green and beautiful meadow. I still remember this state of pure, focused being - completely present and at one with this fascinating beauty of nature,"* Finn Hvidberg explains. A leisurely vibe that the form of the low lounge chair echoes.

Meadow comes with a black painted steel, chrome-plated steel or brushed stainless steel frame.

## CHILDHOOD MEMORIES TRANSFORMED INTO A MODERN CONTOUR



**MEADOW LOUNGE CHAIR** designed by Finn Hvidberg Nielsen  
**CONO TABLE LAMP** designed by Benny Frandsen

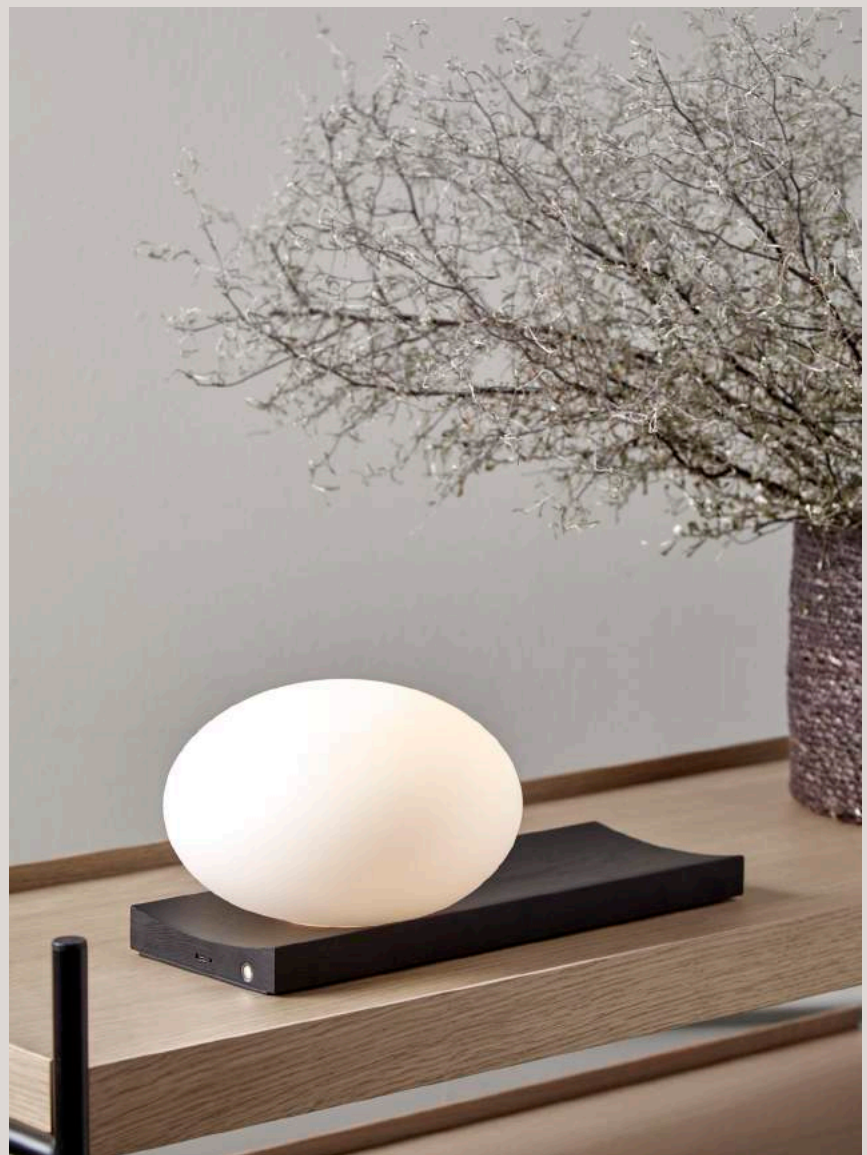


## SHAPED LIKE HARMONIOUS TRANSLUCENT MORNING DEW

### The Dew lamp

Formed by a glowing ellipsoid opal glass, resting on a soft solid wooden tray, the Dew lamp is a contemporary take on archetypal lanterns. A shape inspired by the early morning dew laying on the crisp leaves. Being a multifunctional object, Dew is designed to serve different purposes with ease to blend into the modern pragmatic lifestyle.

With its portable character, the versatile piece functions both as a dynamic table and wall lamp, while its dimmable feature allows you to change the mood and intensity of the light to suit the specific setting. Place it on a desk, use the tray for your pieces of jewellery or hang it on the wall to provide an inviting light with no need for an electrical supply.



### The Ghost pendants

The elegant Ghost lamp has been transformed into a levitating pendant. With its sculptural and minimalistic refined silhouette, the Ghost pendant has a modern purity. Made of translucent opal glass, the shade gives an illusion of a white cloth thrown over the light source. Resembling the appearance of a friendly ghost in the air. A figure that is enhanced by the subtle vertical groove pattern fading out gradually upwards, giving the shade a pleated visual effect. Casting a soft, diffused light, the Ghost pendant will fill the room with a cosy vibe.



**STONE PENDANT** designed by Philip Bro  
**UTILITY SHELF** designed by Rachael Heritage  
**PIDESTALL PLANTER** designed by Emilie Stahl Carlsen

**IT IS TIME TO  
TURN THE LIGHTS  
BACK ON AND  
WELCOME THE  
CHILLY AUTUMN  
AND WINTER  
MONTHS**



*Le Monde à ma porte*  
Editions de La Martinière  
Craft-based Design: On Practical Knowledge and Manual Creativity / Von Handwerkern und Gestaltern



**JEU DE DÉS CANDLE HOLDERS** designed by Oleg Pugachev  
**LA TERRA OCCASIONAL TABLE** designed by Agnes Morguet



### The Jeu de dés candle holders

For AW22 we welcome a decorative addition with a rich feel to our collection. The Jeu de dés candle holders demonstrate true versatility by showcasing a surprising interplay of smooth geometric shapes. With their various opportunities for adding different candles or using them as an aesthetic sculpture on their own, the elegant objects allow you to have a playful approach while styling them to personalise your own composition. Combine the different sizes, turn them as you like and let them create a homely feel in the space, making them admirable accessories for your shelves or coffee table.

*"I wanted to design a small item with a clear function. Working with 3D software as my primary sketchbook allowed me to form an inquiring and open-minded design process. An approach that resulted in a dynamic design. I believe that a design process is always determined by a mix of interdependent factors as material, function, technology and aesthetics. However, the proportions will always vary from project to project and the recipe is not fully known in advance. This is what makes the process an open journey and my job so exciting,"* the German-based designer Oleg Pugachev explains.

The small candle holders are available in three sizes and three colours. Timeless black, contemporary brown and vibrant green. All natural marble shades.



### The Booknd bookends

This season we are pleased to introduce the very first launched design in our HIDN collection. Booknd appears as a true demonstration of a fundamental pillar in the HIDN design language: Getting more out of a product than initially planned.

To obtain its basic function efficiently, a bookend needs a certain mass. A mass that, in this case, hides an additional piece, you can take out and use for a second bookend. Giving you two individual products instead of one without adding any additional material. With the HIDN approach, the Booknds both optimise the material and process while illustrating a transparent connection. Demonstrating the HIDN design language in a tangible and perceptible way.

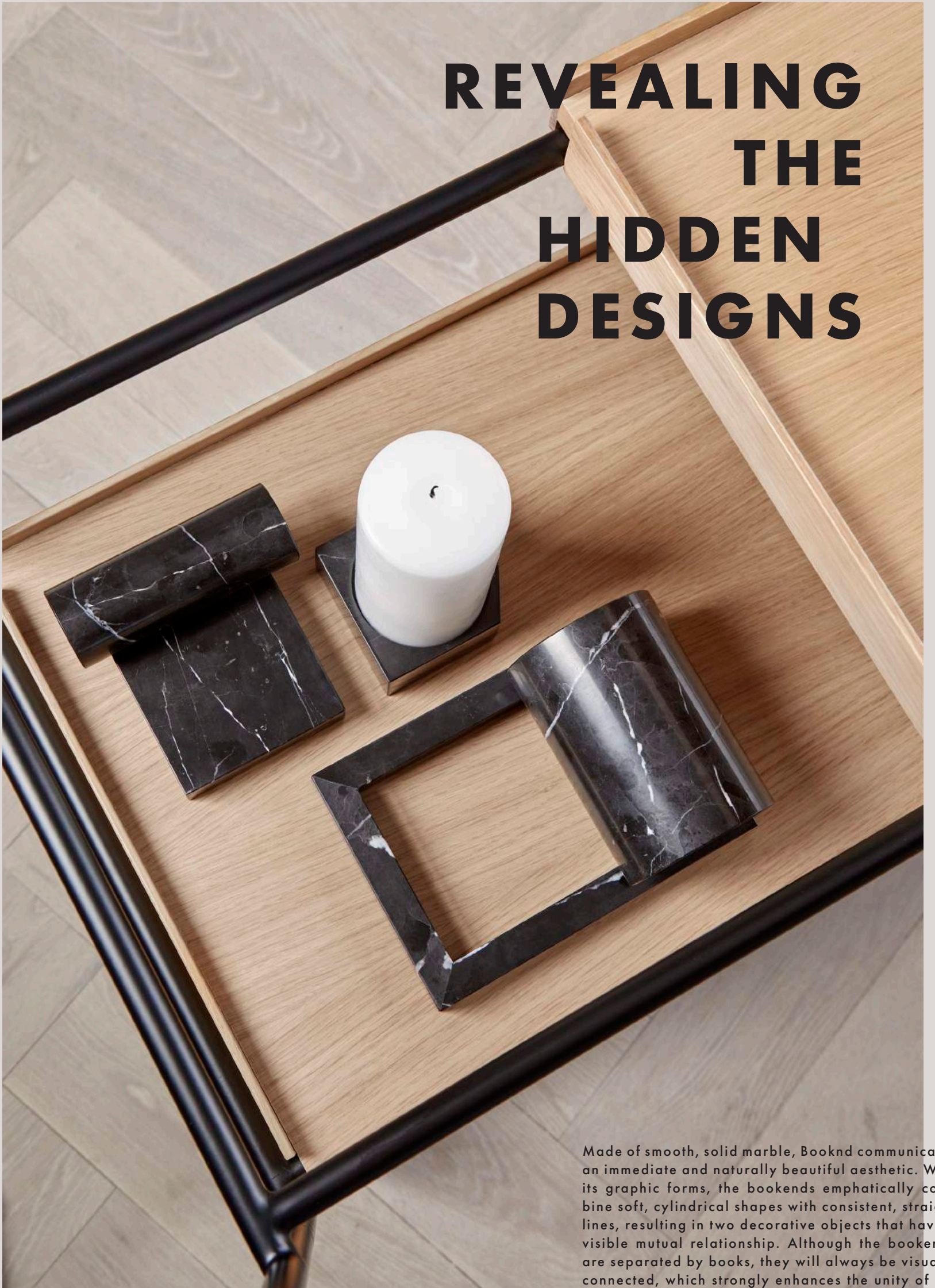
Learn more about the HIDN design concept at [wouddesign.com/pages/HIDN](http://wouddesign.com/pages/HIDN)



**JEU DE DÈS CANDLE HOLDERS** designed by Oleg Pugachev  
**BOOKND BOOKENDS** designed by Roel Vandebek



# REVEALING THE HIDDEN DESIGNS



Made of smooth, solid marble, Booknd communicates an immediate and naturally beautiful aesthetic. With its graphic forms, the bookends emphatically combine soft, cylindrical shapes with consistent, straight lines, resulting in two decorative objects that have a visible mutual relationship. Although the bookends are separated by books, they will always be visually connected, which strongly enhances the unity of the objects. Add an artistic touch to your interior with a small arrangement of the Booknds, functioning both as aesthetic decorations and functional support for your books. The Booknds are available in black, brown and green marble

# LETTING VIBRANT COLOURS INTO THE SPACES







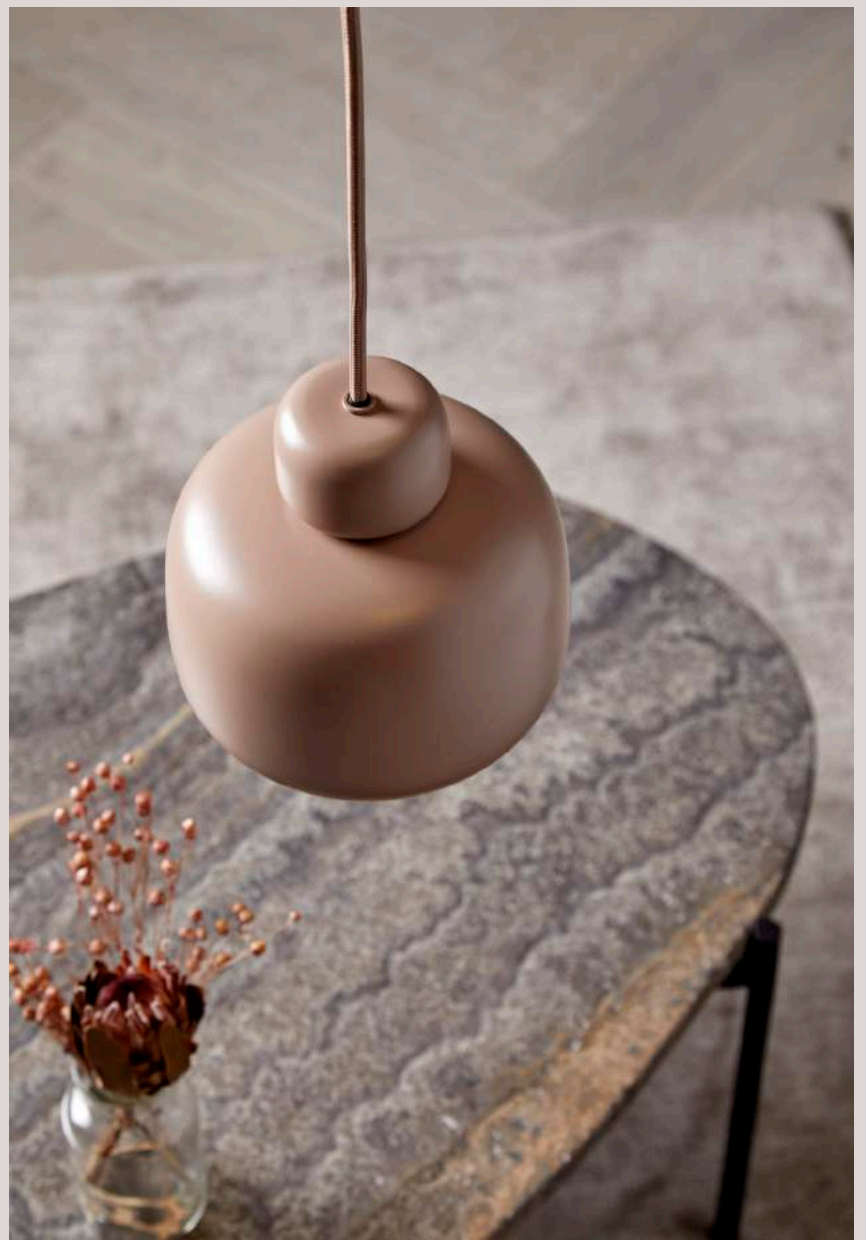
### **The Stone pendant**

Turn the lights back on with the Stone pendant in new contemporary, curated tones.

We are excited to introduce the recognisable and lovable pendant in a new soft colour palette, including dusty rose, vibrant mint, earthy taupe and the matt satin surface. A balanced silhouette that will remain strong and appealing for many years to come.

Drawing inspiration from the softness and completeness of small stones found on Danish beaches, the pendants are designed with the idea of stacking two round stones. Resulting in an understated aesthetic.

Hanging from the ceiling the pendants bring a lightness to the ambience. At the same time, it does not require or take up any space on your table, making it ideal for the reading corner, above the kitchen table or beside the bed. Let the lamp express itself as a statement or pair them up to obtain a sophisticated simple arrangement, enhancing the lighting effect.



**TINT RUG** designed by Shazeen  
**STONE PENDANT** designed by Philip Bro  
**LA TERRA OCCASIONAL TABLE** designed by Agnes Morguet



**RHINA RHINOCEROS** designed by Steffen Juul  
**CONO WALL and TABLE LAMP** designed by Benny Frandsen



### The Cono lamps

The Cono lighting series is a result of close and valuable cooperation with one of the most remarkable, local lighting designers, Benny Frandsen. Launching the prosperous design in a satin finish, we pleasantly commend and admire the Danish designer's genuine sense of great design.

Cono is characterised by the classic geometric shades that communicate a minimalist and soft visual expression. An aesthetic that is enhanced by the silky surface on both colour variants. Making it splendid for contemporary homes.

Benny Frandsen's appreciation of high-quality materials and great design strongly aligns with the values of WOOD, which has generated a solid foundation for professional conversations and this common lighting series.

With the Cono series, he aimed to develop a design that combines aesthetics and functionality smoothly. To him, it was essential to create a lighting design that brings continuous enjoyment while providing a desirable light for both business and pleasure.

# DESIGNED TO CREATE A LOUNGY FEEL

The Nakki series has been a part of the WOUD collection since our first product launch in 2015. Making it a true WOUD classic. A classic that now is extended with a new separate addition consisting of five modular modules and a mountable table. Allowing for an unlimited number of combinations

Designed to suit modern society with constantly changing requirements and preferences, the modular approach makes it effortless to move and restyle the arrangement whenever needed



**NAKKI LOBBY MODULES** designed by Mika Tolvanen  
**CONO WALL LAMP** designed by Benny Frandsen

# THE PERFECT IMPERFECTIONS OF NATURE



**TINT RUG** designed by Shazeen  
**VERDE COFFEE TABLE** designed by Rikke Frost



It is no secret that the all-embracing nature is one of the most stimulating sources of inspiration for designers when forming a new piece. Whether that be the organic shapes, calm colours or unique materials found in the surrounding nature.

With our curated collection, we want to continue to bring a touch of nature and its tranquil harmony into any space through neutral shades and natural materials. Owing to the life in raw nature, the beauty of the materials reveals through their individuality.

Made from travertine, every surface of the La Terra tables is unique as the play of colours varies in the natural material, selected to bring a touch of nature into any space. It was during a barefooted walk on soft pebbles by the ocean the design idea originated. Resulting in a design that beautifully represents and embraces the organic shapes and muted colours of these stones found in the vigorous landscape.

The minimalistic Pedestal planters were also developed with an aim to bring the harmony of nature inside. With a drive to evoke and share the designer's, Emilie Stahl Carlsen, fascination with the vigorous plants and flowers, she designed the portable and spacious planters to make it effortless to create a green oasis in your home.



PEDESTALL PLANTERS designed by Emilie Stahl Carlsen

At WOOD, we highly emphasise adding value to designs on multiple levels. We constantly look for hidden features in form, function and material with an aim to add a multifunctional dimension to the design. An approach we cannot deviate from in our design language. The idea of creating designs that not only take up space but also give space back. Whether that be the hidden storage space in the ARC tables, the integrated room in Sentrum side table or the clever combination of a shelf and drawer of Wallie. Their multifunctional character make them ideal for small spots. Intended for small living.

**WALLIE WALL DRAWER** designed by Amalie Skov Rahbæk



#### **The Wallie wall-drawer**

With its circular, soft shapes, Wallie is a visually strong design, that beautifully combines bent wood with solid black metal. The bracket embraces the magnetic drawer making the design both minimalist and functional. Perfect for storing needful everyday objects in the entrance or your phone and glasses as a durable bedside table.

#### **The Sentrum side table**

The capability to consist in a variety of situations also applies to the Sentrum side table. Inspired by the conception of creating an elegant space for the everyday mess. Designed to integrate and interact with its user, the s-shaped construction forms two spaces for ingenious storage. Enhancing the usability of the side table.



**FLORA SOFA** designed by Yonoh  
**TINT RUG** designed by Shazeen  
**SENTRUM SIDE TABLE** designed by Schmahl+Schnippering

# INNOVATIVE STORAGE SOLUTIONS

for small spaces



**KYOTO RUG** designed by AD Miller  
**COLLAR SOFA** designed by Meike Harde  
**ARC COFFEE TABLES** designed by Ditte Vad and Julie Begtrup  
**ELEVATE SHELVING SYSTEM** designed by Camilla Akersveen  
and Christopher Konings

# THE FEELING OF HOME



**ANNULAR PENDANT** designed by MSDS Studio  
**FRAME DINING CHAIR** designed by Mario Tsai  
**TREE DINING TABLE** designed by Elisabeth Hertzfeld





Every home expresses a personality. Every home evokes a certain feeling. Every home tells its very own unique story. Before you move your belongings in, it is just a place, an apartment, a house. Spaces and places can have souls, hearts and histories, but as soon as you decorate the space with your collected furniture and interior, it suddenly turns into a home. Your home.

Thoughtfully selected to create the most suitable surroundings for you and your family, your unique composition of furniture reveals a unique atmosphere. An atmosphere that should allow you to relax, feel safe and check out of the complex world outside the doors. Providing an experience of inspiring and intimate spaces.

A home should be both functional and beautiful. A place for family and friends. Holidays and everyday life. Inspiration and immersion. With this in mind, we do our utmost to meticulously select compelling designs, that enable you to form a space that makes you feel at home the moment you step inside

The chosen colours and materials reflect you and bring a personal touch to the room. By implementing portraits, antiques and travel souvenirs, you can evoke memories, tell stories and personalise the spaces. When letting brand new furniture into your home, you start a new story. Designs act and appear differently depending on the rooms they become a part of. Small or spacious. Bright and inviting or dim and enclosing. Making every piece its very own. And as time passes, the design will become a natural part of your home. A part that would be missing if it was removed



**TACT RUG** designed by Shazeen  
**ARRAY HIGHBOARD** designed by Says Who  
**GHOST FLOOR LAMP** designed by Studio Kowalewski



**ARKIV BOOKEND** designed by Ella Shegai  
**STEDGE SHELF** designed by Leonard Aldenhoff  
**LEAN LOUNGE CHAIR** designed by NUR Design  
**ROMBO RUG** designed by Studio MLR  
**SENTRUM SIDE TABLE** designed by Schmahl+Schnippering



**ANNULAR PENDANT** designed by MSDS Studio  
**VERDE COFFEE TABLE** designed by Rikke Frost  
**FLORA MODULAR SOFA** designed by Yonoh  
**TINT RUG** designed by Shazeen

The living room is a place for relaxation. A space where you withdraw from the complex world and everyday rush. It forms the versatile setting for both common social activities with friends and family and for individual contemplation in company with a book or your favourite series in the deep seat of the sofa.

A room that is characterised by cushioned furniture and tactile materials that encourage you to touch and feel the texture. Cold marble stones, thick hand-tufted wool rugs and knobbly bouclé fabric. Materials that contribute to creating a space you enjoy spending time.

# A SPACE WITH ROOM FOR LIVING



**KYOTO RUG** designed by AD Miller  
**COLLAR 2-SEATER AND OTTOMAN** designed by Meike Harde  
**GHOST FLOOR LAMP** designed by Studio Kowalewski

# VERSATILE HALLWAY STORAGE

## The Utility shelf

With a vision of combining the function of a cupboard and the lightness of an open shelving unit, the Utility shelf forms a versatile design, which is characterised by its soft curves and arches. Made of natural oak, Utility communicates an honest design. A design language that is beautifully enhanced through the exposed, solid oak construction, revealing the unique grain.

Utilise space in small corners, passages, hallways, kitchens and bathrooms with the versatile and visual light shelving piece. The two compact shelves with three sides encourage you to contain and display both aesthetic pieces and convenient objects that should be easily accessible during the day. Whether that be towels and lotions in the bathroom, tableware and seasonings in the kitchen or scarves and gloves in the hallway. Emphasising true utility.



**STONE PENDANT** designed by Philip Bro  
**ILLUSION HANGERS** designed by Philip Bro  
**TÖJBOX WARDROBE** designed by Made by Michael  
**PIDESTALL PLANTER** designed by Emilie Stahl Carlsen



**KYOTO RUG** designed by AD Miller  
**NAKKI BENCH** designed by Mika Tolvanen  
**KNAEGT COAT RACK** designed by Rikke Palmerston



**KYOTO RUG** designed by AD Miller  
**ILLUSION HANGERS** designed by Philip Bro  
**O&O RACKS** designed by Christine Rathmann

**ARKIV BOOKEND** designed by Ella Shegai  
**STEDGE SHELF** designed by Leonard Aldenhoff  
**HIBO HIPPOPOTAMUS** designed by Steffen Juul

A timeless expression is something we cannot deviate from in our fundamental design language. It is an approach that substantiates our vision to create designs that stay relevant to us as time passes and fashion changes. Often characterised by stringent lines, classic shapes and obvious functions. Just like our Pause chairs, Virka sideboards and Stedge shelves.

With an aim to honour and recognise existing designs, we also treasure exploring the possibilities of developing and extending some of the beloved products. For example, this year we have introduced the Dot pendants and Cono lamps in the modern satin plated metal. When a product allows you to discover and add new colours, functions and sizes while still retaining a strong form language, we believe it signifies a long-lasting design.



**PAUSE COUNTER CHAIR** designed by Kasper Nyman  
**CONO TABLE LAMP** designed by Benny Frandsen  
**VIRKA LOW SIDEBBOARD** designed by MOAKK and Røpke Design



# SUBTLE NORDIC MINIMALISM



**KYOTO RUG** designed by AD Miller  
**ARKIV BOOKEND** designed by Ella Shegai  
**LEVEL DAYBED** designed by MSDS Studio  
**ANNULAR PENDANT** designed by MSDS Studio  
**GHOST TABLE LAMP** designed by Studio Kowalewski

### The Virka sideboard

With clean, comprehensible lines and a simple expression, the Virka sideboard series forms a classic yet characterful design. A design that easily can blend in as a part of a consistent design language or function as a visual strong standalone object. In contrast to the spacious carcass, the firm geometrical frame elegantly lifts the sideboard above the floor and adds a delicate lightness to the design. Designed with sliding doors, adjustable shelves and cable holes, Virka elegantly combines functionality and simplicity.





# SOPHISTICATED DANISH DESIGN



## The Array sideboard

Array sideboards are a modern take on traditional storage design. Inspired by the wooden slate cladding found in modern architecture, the vertical slates create a strong visual effect from catching both light and shadow in the depth of the storage space. An illusion of transparency that is intended to create a feeling of growing curiosity as you get a glimpse of what is hidden behind closed doors

**SEATING**



**PAUSE** dining chairs  
Oak, black, oiled oak, oiled oak w/ leather seat and black w/ leather seat



**MONO** dining chairs  
Oak and black



**S.A.C.** dining chairs  
Black and black w/ leather seat and back



**FRAME** dining chairs  
Taupe and dark grey



**PAUSE** bar & counter  
Black and oak



**MONO** bar & counter  
Oak and black



**LEAN** lounge chairs  
Ivory, dusty green and army green



**BAENK** bench  
White pigmented oak



**LEVEL** daybeds  
Available in four leathers and two bouclé fabrics with an oak or black painted oak frame

NEW



**MEADOW** lounge chairs  
Chrome plated, black painted and brushed stainless steel frame. Available in defined price groups

**STORAGE and SHELVING**



**ARRAY** cabinets  
Five sizes - available in walnut veneer, white pigmented oak veneer and black painted oak veneer





**VIRKA high sideboards**  
Available in black/oak, black, oak and walnut/black



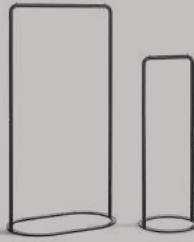
**VIRKA low sideboards**  
Available in black/oak, black, oak, white and walnut/black



**TÖJBOX wardrobes**  
Two sizes - oak and black



**TRAY shelves**  
Two sizes - mix oak, black and walnut trays



**O&O racks**  
Two sizes



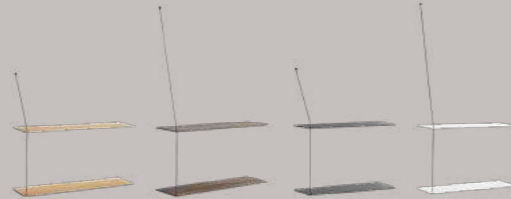
**ELEVATE modular shelving system**  
Available in oak and black



**INPUT organiser**  
Solid oak



**Utility shelf**  
Oak and dusty green



**Stedge shelves**  
Two sizes - oak, smoked oak, black and white



**WALLIE wall drawer**  
Oak, black and walnut



**KNAEGT coat rack**  
Oak and black



**HOOP rack**  
Oak and black



**COUPÈ shelf**  
Black

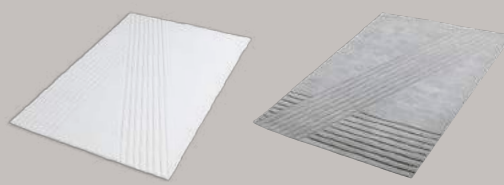


**COUPÈ shelf**  
White

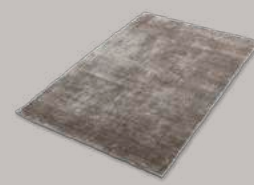
## TEXTILES



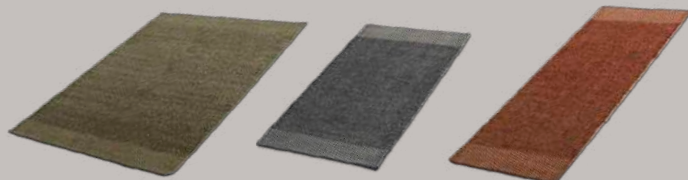
**TACT rugs**  
Three sizes - dark grey and off white



**KYOTO rugs**  
Four sizes - off white and off white



**TINT rugs**  
Three sizes - beige



**ROMBO rugs**  
Three sizes - moss green, grey and rust

NEW COLOURS



**DOUBLE throw**  
Indian red/Chestnut brown, beige/off white and light grey/dark grey

## DINING TABLES



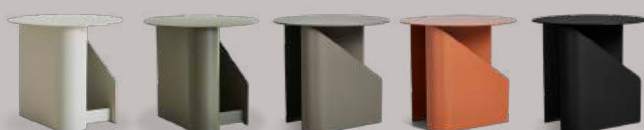
**TREE** dining tables  
Three sizes - black/black, beige/black and beige/beige



**PIEZAS** dining tables  
Three sizes - white pigmented oak



**TREE** console tables  
Two heights - beige, green and black



**SENTRUM** side tables  
Warm grey, dusty green, taupe, burnt orange and black



**SOROUND** occasional tables  
Three heights and three diameters - concrete, black painted ash, beige and black laminate



**LA TERRA** occasional tables  
Three sizes - grey melange and ivory



**DUO** side table  
Black painted metal



**COME HERE** side tables  
Oak and black



**VERDE** coffee tables  
Black and brown marble



**ARC** side and coffee tables  
Three sizes - white pigmented ash, oiled oak, black, walnut and white pigmented lacquered oak

## SOFAS



**NAKKI** sofas  
Armchair, 1-seater, 2-seaters, 3-seater, ottomans and benches



**NAKKI LOBBY** modules  
Modules: Corner, 1-seater, chaise longues, ottoman and table



**COLLAR** modular sofa  
2-seater, 2.5-seater, 3-seater, open-ends and ottoman



**FLORA** modular sofa  
Modules: Middles, pouf, corner and cushion

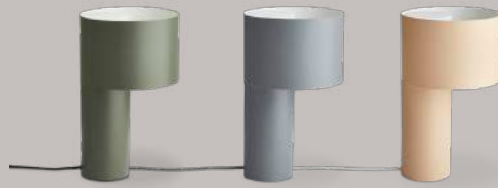
**LIGHTING**



**PUMP** table lamp  
Black w/ opal glass



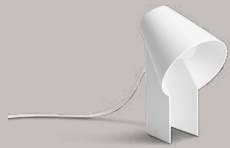
**GHOST** lamps  
Two sizes



**TANGENT** table lamps  
Forest green, cool grey and desert sand



**CONO** table lamps  
Satin and black



**STUDY** table lamp  
White painted metal

NEW



**DEW** table/wall lamp  
Oak and black w/ opal glass



**KUPPI** wall lamps  
Mustard yellow and black



**CONO** wall lamps  
Satin and black



**MERCURY** wall lamp  
Black painted metal



**CONO** floor lamps  
Satin and black



**PUMP** pendant  
Black w/ opal glass



**LUNAR** pendant  
Black w/ opal glass



NEW

**GHOST** pendants  
Two sizes - opal glass

NEW COLOURS



**STONE** pendants  
Black, white and mustard yellow, taupe, satin, dusty rose and mint painted metal



**CONO** pendants  
Two sizes - black



**ANNULAR** pendants  
Two sizes - white, black, nude (only small) and mint (only small)



**LU** pendants  
Two sizes - taupe



**GAP** pendants  
Three sizes - black



**DOT** pendants  
Three sizes - satin w/ smoked glass and black w/ opal glass

## ACCESSORIES



**WOODEN ANIMALS**  
Three sizes

NEW



**BOOKND** bookends  
Black, brown and green marble



**ARKIV** bookend  
Concrete

NEW



**JEU DE DÈS** candle holders  
Black, brown and green marble



**MIRROR** barb  
Solid oak



**ILLUSION** hangers  
Black ABS plastic



**PIDESTALL** planters  
Three sizes - grey, taupe and black



**HAAK** hooks  
Dark grey and black



**TAIL WING** hooks  
Two sizes - oak and black



**EILEEN** hook  
Black



Discover more about the designers and our full collection at [wouddesign.com](http://wouddesign.com)

Download all our high resolution packshots and lifestyle photos at [woud.presscloud.com](http://woud.presscloud.com)

# W O U D